

WINDWARD BEAT

Charting a Safe Course for Summer Cruising

William Anonsen



As summer arrives in Hawai'i, there is no finer place to enjoy time on the water than here at home. Long sunny days, dependable trade winds, and inviting seas create ideal

conditions for both seasoned sailors and those seeking the pleasure of a relaxed coastal cruise with family and friends.

For our valued members of the WYC, summer is more than a seasonal change. It is a time to reconnect with the ocean, strengthen seamanship skills, and appreciate the maritime lifestyle that makes Hawai'i such a special place to live and sail.

A safe and enjoyable boating season begins with thoughtful preparation. Before setting out, vessel owners should ensure their boats are in sound operating condition. Hulls and decks should be inspected for maintenance concerns, while rigging and sails should be checked for chafe, fatigue, or loose fittings. Hawai'i's trade winds can quickly expose even minor issues aboard a vessel.

Engines, electrical systems, radios, and navigation equipment should also be tested to confirm proper operation. Safety equipment, including life jackets, flares, fire extinguishers, EPIRBs, and first aid kits, should be current, accessible, and ready for use. A careful inspection before departure can make all the difference in ensuring a safe and enjoyable outing.



Understanding Hawai'i's summer ocean conditions is equally important. Trade winds generally provide excellent sailing throughout the islands, although localized gusts around headlands and channels require attention and good judgment. During the summer months, south swells become more active, particularly along south-facing shores such as Waikiki and Diamond Head, creating changing surf and harbor conditions.

While hurricanes remain relatively rare in Hawai'i, the Pacific hurricane season officially begins in June. Mariners should stay informed of weather forecasts and ocean advisories before and during any voyage. Whether planning a brief afternoon sail, fishing trip, or inter-island passage, careful voyage planning enhances both safety and enjoyment. Reviewing wind and swell forecasts, identifying harbors of refuge, and sharing a float plan with someone ashore are prudent practices. Proper provisioning, including water, food, sunscreen, and protective clothing, is also essential under Hawai'i's tropical sun.

Preparing crew members by reviewing safety procedures and onboard

responsibilities helps ensure a safer, more coordinated experience for everyone aboard. As mariners, we are fortunate to enjoy one of the world's most remarkable marine environments, and with that privilege comes responsibility. Practicing proper anchoring techniques helps protect coral reefs, while responsible waste disposal and reducing single-use plastics help preserve cleaner waters for future generations.

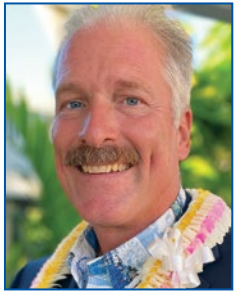
Summer sailing in Hawai'i captures the essence of island life, connection, respect, and appreciation for the ocean that surrounds us. Whether racing offshore, cruising along the coastline, or enjoying a quiet sunset sail off Waikiki, every voyage offers an opportunity to create lasting memories.

On behalf of our WYC maritime community, we wish all members a safe, enjoyable, and rewarding summer season.

E holo mālie i ke kai
malino i ke aheahe makani
*Travel peacefully on the calm seas
carried by the gentle sea breezes*

Commodore's Comments

Commodore Peter Rudlowski



Greetings, Fellow Club Members!

The Adult Dinghy Sailing Program has now introduced over 100 adults to sailing using the Club's own

fleet of 10 RS Zests. Some students have taken the six-week course just once, while others have completed three full sessions – and a number are now pursuing their US Sailing instructor certification under the guidance of WYC's own Guy Fleming.

The next step in sailing instruction will take place in one-design keelboats. After extensive research, the program has decided that the J/7 is the boat most yacht clubs on the mainland are adopting. Not to be confused with the J/70 or J/80, the J/7 is purpose-built to serve as both an exceptional club

boat and a training vessel.

The J/7 features a large cockpit – perfect for sailing with family and friends – while also delivering the kind of performance that lets the boat sail and surf like it's on rails. Each boat will be rigged with a bowsprit and spinnaker. J-Boats, which has built over 15,000 boats, reports that the J/7 has received more paid pre-orders than any model it has ever produced.

The WYC Education Foundation, with support from the WYC Board of Directors, has placed orders for four new J/7 sailboats. Three very generous members have donated funds to the WYCEF to purchase the first four boats, which are scheduled to roll off the assembly line at the J-Boats factory in September.

For a limited time, WYC also holds an option to purchase two additional boats. We are moving forward with the first four and have negotiated an

excellent group price for all six. Boats #5 and #6 are available now – and this window will not stay open long. We are looking for donors to help bring these new boats to our yacht club. For questions, please email S/C Michael Roth at rothcomm@gmail.com.

Finally, I wanted to plug the upcoming "Summer Solstice Raft-Up" event. On Saturday, June 20, Club boats will anchor out in "the Bight" in front of Waikiki Beach. Scott Carey & The Rum Runners will play live music aboard Alan Joaquin's catamaran, *Kolohe*, from 1 - 4 pm.

Enjoy a day on the water listening to music, swimming, and barbecuing on the longest day of the year – and what better way to spend it than with fellow Club members and friends?

Mahalo,
Peter Rudlowski
WYC Commodore
commodore@waikikiyachtclub.com

J7 Sailboat Sponsors Needed

Waikiki YACHT CLUB

WaikikiYachtClub.com/sailing-lessons

We need 2 more boats to complete the fleet!

Help us launch our new sailing instruction program.

We plan on having **6 new J7s** in our teaching fleet by October this year.

4 donors have contributed to purchase **4 J7 sailboats** for the **WYC Education Foundation**.

2 New Donors will receive:

- Naming rights
- First-use privileges whenever the boats are not in use for classes
- Hold your boat personally in your own name
- Or donate your J7 to the WYC Education Foundation – a 501(c)(3) charitable organization

WYC has taught 100 adults to sail so far!

The WYC Education Foundation has now introduced over 100 adults to sailing this last year, using the club's own fleet of 10 RS Zests. Now we're adding 6 – J7s to WYC Adult Sailing Classes.

We need 2 more boats to complete the fleet of 6 boats!

Contact:
Michael Roth
808.226.2175
rothcomm@gmail.com

Waikikiyachtclub.com/sailing-lessons

Waikiki YACHT CLUB

SUMMER SOLSTICE RAFT UP

SATURDAY, JUNE 20TH

1PM - 4PM

Scott Carey & The Rum Runners

Sail out to "The BIGHT" just SouthEast of the Ala Wai Harbor Entrance with us to anchor out for some fun. We will monitor VHF channel 68.

Vice Commodore's Notes

Vice Commodore Gini Enos



Hawaiian Style Ambiance

Who else misses the tiki torches on the wharf at WYC in the evening hours? My curiosity about these widely recognized

symbols of Hawaiiana came from the not-so-sudden realization that they have been missing for some time. "But why does it matter?" I thought. Like many things in our environment, some things

just go together, and some things feel slightly "less than" when the expected accompaniment is missing. For a short time, we can all usually understand that repairs take time, maintenance must be done, and things might become out of place during the process. But why do we miss the tiki torches? Perhaps it's that they are so iconic in displaying a sense of not only Waikiki but also the transition of day to night and a time to relax. Firelight can be as beckoning as a fireplace on a cold night, candlelight at the dinner table, or votive candles to set a romantic mood. And in Hawai'i, many resorts still perform the "tiki torch lighting ceremony" at sunset. For a little deeper dive, I consulted Al to turn up some interesting facts.

Native Hawaiians (Kānaka Maoli) historically used torches called **lamalama**. These were made from bamboo stalks ('ohe). With its high oil content and slow-burning properties,

the kukui nut was used as fuel, as the nuts often dripped to sustain the flame. The bindings were made from ti (ki) plant leaves or coconut palm midribs. Uses included nighttime fishing along shallow reefs to attract and disorient the fish, illumination at ceremonies and cultural practices, and practical lighting. That all sounds very romantic to me.

Modern-day uses of tiki torches evolved from the above but now have little resemblance to the original structure or their uses. Today, tiki torches are used primarily to evoke that sense of ambiance and romanticism of old Hawai'i at luaus, beachfront hotels, and places where people gather to relax in the early evening.

If you count yourself as one who hopes for the speedy return of the old Hawai'i firelights on our wharf, mention it to our staff and let's see if we can get the menehune activated.

Aloha,
Gini Enos
WYC Vice Commodore
vicecommodore@waikikiyachtclub.com

Waikiki  **YACHT CLUB**

PINK BUOY MEMORY LANE PARTY

CELEBRATING LONG-STANDING MEMBERS OF 20+ YEARS

**SATURDAY
JUNE 27
5:00 - 8:00 PM**

BRING MEMORABILIA & COME READY TO SHARE ALL YOUR FAVORITE WYC MEMORIES AT THE OPEN MIC!

MASTER OF CEREMONIES: SHAWN KELLY



\$25.95++
INCLUDES PLATED DINNER
MENU COMING SOON

+ 20% service charge* + tax | Portions of the service charge may be used to offset employee expenses other than wages. | Menu coming soon.

**PACIFIC
DIVERSIFIED
FINISHES**

Hawaii's Premier Yacht
Refinishing Specialist





Call for Estimate:
(808) 847-1900
jim@pdfhawaii.com
24 Sand Island Access Rd., #14, Hono, HI 96819



HONOLULU YACHT BROKERAGE
INTERNATIONAL

Catalina 400MKII



Immense interior volume, with a comfortable saloon. It features a forward V-berth and a very large aft cabin, with a queen-sized berth.



The galley is spacious, featuring a three-burner stove with oven and microwave, large stainless steel, double sink with cutting board, and very generous, deep, refrigeration. The large cockpit features a twin helm layout and functional walk-through transom.



808 - 528 BOAT (2628)
WWW.HNLYBI.COM
HOW MAY WE HELP YOU?



General Manager's Message

General Manager Dennis Conneally

The Club occasionally hosts special events that highlight the exceptional talents of our staff.

Last month, **Chef Marcus, Sous Chef Bella, and Lead Bartender Jake Colby** collaborated on an elegant outdoor *Secret Chef's Whiskey Dinner*, prepared tableside for 16 very happy and lucky members. Guests enjoyed seven whiskey tastings alongside the chefs' five-course distinctive culinary creations, complemented by five signature cocktails crafted exclusively for the evening by **Jake**. This was the first in a series of **"Pop-Up"** dinners on a first-come, first-served basis that will be featured throughout the year. Please check your weekly Navigator and the monthly Windward Beat for more information.

On that note, for all wine enthusiasts, please join us Tuesday, June 23rd, for our **Summer Wine Dinner** featuring the hilltop wines of **Daou Vineyards**, located atop the rugged Santa Lucia coastal mountain range in the famous Paso Robles wine-growing region of California. The night will offer another spectacular five-course dinner with **Daou wines** paired with each course. The evening begins with a half-hour wine and cheese reception at 6:00 pm, followed by dinner served promptly at 6:30 pm.

Seating is limited to the first 50 members who sign up.

This year's **WYC Hawaiian Luau**, the biggest party of the summer, is scheduled for Saturday, August 1st. Be sure to plan your vacation around this event. The Activities Committee, chaired by **Director Bobby Frazier**, has organized a celebration to rival any Transpac party. Reservations are *unlimited*, so bring your friends to Waikiki's party of the summer.

Mahalo, and I look forward to seeing you around the Club!

DENNIS

Waikiki YACHT CLUB

Secret Chef's Table

- Bourbon Edition -

- First Course -
SMOKE & SALT OYSTER
Grilled XL oyster, bourbon brown butter, chili crisp, lemon, smoked salt
Lilikoi Highball | Jim Beam

- Second Course -
DIRTY SOUTH HULI CRACKBIRD
Smoked then fried leg quarter, huli-huli bourbon glaze, pineapple Fresno ponzu, crispy chicken skin
Plantation Tea Spritz | Makers Mark Select

- Third Course -
SLAB & ASH
Smoked and pressed short rib, black garlic bourbon glaze, charred onion puree, pickled shallots
Rosie's Farm | Elijah Craig Barrel Proof

- Fourth Course -
FAT GAP
Smoked pork belly, molasses bourbon glaze, black garlic, crispy greens
Smoked Old Fashioned | Knob Creek

- Barrel Break -
LIVE EMBER BITE
Grilled prime beef skewer, bourbon pepper glaze

- Fifth Course -
KEY LIME
Key lime mousse, graham crumble, torched meringue, bourbon caramel
Bubba's Sugar Sour | Bubbas Burnt Sugar Bourbon

Trophy Case

S/C Michael Roth

The trophies in our cases represent more than just wood, glass, marble, and metal. They are the symbols of all we hold near and dear. Corinthian competition. Sailing is the only international sport that is a self-governed sport. When you foul someone, you are expected to take your penalty or retire from the race. The mindset is a little different today, but the rules are the same. The sheer number of trophies in our cases is intimidating to most. Here is a list that does not include the Honolulu Sail & Power Squadron or the WYC Paddling Program trophies. We will present these categories in future articles. You can find each article on the Club web page under Regattas. In no particular order, our trophies include:

Club Trophies (Non-Sailing):

Bar Cup
Rudy Buchanan Member Of The Year
WYC US Sailing Sportsmanship Award

Sailing:

Two Olympic Silver Medals
McFaul Trophy
DJ Johnson 3-Day Around O'ahu Trophy
3-Day Race Class C
Etechells Half Model Season Points
John B Kelley Season Points Ocean Series
Phil Drips Regatta Perpetual Trophy
Phil Drips Season Points Beach Fleet
King Kamehameha Trophy (3)
Duke Bowls
Dr. Les Vasconcellos - Top Rotarian
Artwork Trophy
• Joe Phillips Trophy Top ORR - Crystal sailboat
• Joe Phillips Trophy Top PHRF - Tall Fastest 24-Hour run. Volvo Ocean Race
Matson - 1940 race - Gil Budar Trophy

Pan Am Clipper Cup - Kenwood Cup -- Waikiki Offshore Series:

King Kamehameha Overall Trophy - Koa Holuke'a
Hawai'i Silver Jubilee Porthole Trophy
Hawai'i Silver Jubilee Trophy B. Damon Trophy
Robert G. Dodge Trophy
Consul General Of Japan Trophy
Consul General Of Australia Trophy
Consul General Of Auckland Trophy
US Navy Earl Spangler Trophy
Chako Cup

Transpac Trophies:

laukea Trophy - First foreign boat elapsed time
Philippe Kahn First 50' corrected - Koa Holuke'a
1st Corrected time winner - Transpac 1973 & 75 Chutzpah
King Kalakaua Trophy - First overall corrected

Youth Sailing:

Roy E. Disney Jr. Sailor of the year
Walter Light Jr. Yachtsman of the Year
Smythe-Bemus
Myron Kerner
HYSA Season points Around the State race
Graciella Dixon Sportsmanship
Phil Frey Most Improved
Parent of the Year
Beatrice A Patton El Toro Seasons Points
Duke Bowl El Toro
Duke Bowl Laser

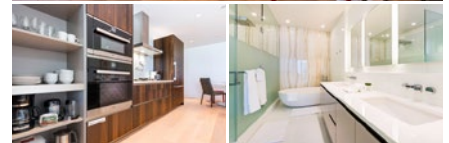
HYRA Trophies:

Lipton Cup
Lipton Cup One Design
Ken Morrison Trophy
Lipton Cup
Kalakaua Cup
Dillingham Trophy
All islands Trophy Gil Budar
PH-1 Season points I-210 Fleet

If you have information on any of our trophies, please contact me at rothcomm@gmail.com.



WAIEA
Ward Village
1118 Ala Moana Boulevard Street,
Honolulu, HI 96814



#1203 \$2,050,000

- 1 BD, 2 BA
- Net Living - 1,139 sf. Lanai - 69 sf.
- 1 Parking Stall, Views - Ocean, Marina, Coastline, City & Sunset

KO'ULA
Ward Village
1000 Auahi St Honolulu, HI 96814



#1503 \$870,000

- 1 BD, 1 BA
- Net Living - 509 sf. Lanai - 58 sf.
- 1 Parking Stall, Views - City, Sunset & Coastline



John "Jack" Tyrrell
President, Realtor, CRS
RB-19880

C : 808-306-6933
O : 808-532-3330

Jack.tyrrell@jtchawaii.com
www.jtchawaii.com

JACK TYRRELL
& COMPANY

A Real Estate Brokerage Corporation

* The information presented herein is provided as is, without warranty expressed or implied of any kind. Information herein deemed reliable but not guaranteed.

Power Perspective

Rear Commodore for Power Mike Kelly



Aloha ~

I hope you all had a great Memorial Day weekend and took some time to reflect on the meaning of Memorial Day. I hope you had

time to get out and enjoy one of our great water activities, be it sailing, fishing, paddling, diving, or any other opportunity that is offered. I was off island on a scuba-diving trip in Indonesia, so I missed all of the great activities at our Club.

We are well into our boating season. I am still looking for volunteers to assist with putting on a Club fishing tournament. Please contact me if you are interested. I would like to try and reschedule the Keiki Fishing Tournaments for late summer.

I am still trying to put together a group cruise for the Fourth of July weekend if anyone is interested. Please email me at rc-power@waikikiyachtclub.com if you are interested. It would be open to all power and sailboats. We could plan a raft-up and have a potluck dinner on one of the boats.

The Mooring Committee is trying to identify all maintenance issues and requirements on the docks. If you know of or have any issues, please email the Port Captain, Branden, at portcaptain@waikikiyachtclub.com. This includes

damaged pedestals, missing/broken electrical outlets and breakers, leaky water valves, damaged deck planks, damaged/missing rubber on the edges of the docks, etc.

I want to pass condolences to SC Fran Hartmann on the passing of her husband, Duane Hartmann. Duane was a Rudy Buchanan Trophy recipient in 2001. He did so much behind the scenes for our Club and was one of the driving forces behind our current mooring facilities. He played a major role in the building of the two Abracadabra boats (USA 50 and USA 54) when WYC was a challenger for the America's Cup in 2000.

See you at the Club and on the water.

Mike Kelly
R/C for Power
rc-power@waikikiyachtclub.com

J U N E 2 0 2 6		Musical Bingo 6:30 – 8:00 PM	SAT 06	S A T U R D A Y S
	SAT 13	Music: Notso Purdy 6:00 – 9:00 PM		
		Karaoke Night 6:00 – 9:00 PM	SAT 20	
	SAT 27	Trivia Night 6:30 – 8:00 PM		

No reservations required - Complimentary!

Food and Beverage Hours

MON & TUES
Closed

WED, THURS & SAT
Food Service: 11:00 am – 8:30 pm
Bar: 11:00 am – 9:00 pm

FRIDAY
Food Service: 11:00 am – 9:00 pm
Bar: 11:00 am – 10:00 pm

SUNDAY
Food Service: 10:30 am – 8:00 pm
Bar: 10:30 am – 8:00 pm

Reservations are encouraged in the Dining Room on Thursdays, Fridays, and Sundays. Dining Room seating is closed on Wednesdays and Saturdays. Wharf Grill & Bar seating is always first-come, first-served!

Waikiki YACHT CLUB

FATHER'S DAY STEAK & EGGS BRUNCH SPECIAL

Sunday Brunch, June 21,
10:30 AM-2:00 PM

\$32.95 for a 12oz Ribeye served with 2 Eggs Any Style & Breakfast Potatoes



Burgee Banter

Jeanne Martin-Hopkins

Longtime Waikiki Yacht Club member Kent Matsuoka recently shared this story:

"I was recently invited by the Adventurers' Club of Los Angeles to speak about my experiences sailing on blue-water transits I've crewed aboard, including those between Hawai'i and the mainland.



Adventurers' Club of Los Angeles

They have a number of burgees on display at the club, but I was surprised not to see one from WYC. At the conclusion of my presentation, I offered them one. It is expected to be hung in the main auditorium next to a Transpac Yacht Club burgee.

I presented the burgee to Adventurers' Club president Rich Mayfield, an Annapolis grad, Navy veteran, and avid sailor.



Adventurers' Club of Los Angeles President Rich Mayfield and Kent Matsuoka (L to R)

The club was founded in 1922, a branch of the Adventurers' Club in New York, and once had a chapter in Honolulu. Past president Michael Lawler is a multiple Transpac participant, last competing aboard Hula Girl in 2025."

Thank you, Kent, for representing the Waikiki Yacht Club! Do you have a burgee story to share? Please email Jeanne at jeennem1212@hotmail.com.



Adult Sailing

Adult Sailing Director
Todd Vas Dias

After weathering the Kona lows and brown water advisories, the Adult Dinghy classes have been rewarded with clear blue waters and fantastic tradewind conditions throughout April and May.

One of our coaches, John Ingalls (retired college sailing coach and Yingling class world champion) even spotted the biggest honu he's ever seen while coaching on a Sunday morning! Over the past month, students progressed from learning to tack and gybe inside the Ala Wai harbor basin to sailing the cerulean blue waters off Magic Island.

We recently graduated 8 sailors from the Wednesday afternoon class, including Zahit, who shared: "I liked all parts of the class. This sport took me away from all of the stresses of life." We couldn't agree more and are so happy he chose to learn with us at the WYC Adult Dinghy program.

The new Adult Dinghy Sailing session began Wednesday, May 27, and Sunday classes start June 7. Sign up today before classes fill up!



Caroline "getting away from it all" out on the water



Marguerite and coach Todd, enjoying a burst of speed outside the channel

Mother's Day Brunch & Boatique Fashion Show



Future WYC sailors modeling keiki burgee wear



Models Jeremy & Yasemin leading the way on the catwalk



Models Andrea Fredrick with keiki, Capri & Beckett

Youth Sailing

Coach Guy Fleming



I am rolling into my 41st year starting at the end of May (check the Youth Sailing link on the WYC website or inquire at the front desk about summer sailing). As I let that sink in to my brain, I realize I could not have done it without the support of so many people. One of the coolest perks of this job was that I was able to name events after people that had a profound impact on the sport. In many cases, I was able to create those events while people were still alive to enjoy them and be recognized. This spring had a series of events that are all named.

The High School Sailing Interscholastic League of Honolulu has two trophies (Varsity 1 and Varsity 3) that are named for my college sailing coach, Charlie Dole. These events are in their 24th year—Charlie came to the first ten banquets. The Varsity 2 division was named for Tom Holden, the Punahou Athletic Director who helped sailing get established as a league. This year, racing began on April 1st and concluded on April 28th. Sixty-two races were run and racing was tight. Varsity 1 was tied after 18 races. Varsity 2 and Varsity 3 were also decided on the final night. Results are as follows:

CHARLIE DOLE BOWL Varsity 1: 19 races

Punahou	63
Le Jardin	64
Mid-Pacific	90
'Iolani	131

TOM HOLDEN BOWL Varsity 2: 22 races

Punahou	19
Le Jardin	21
Sacred Hearts	42
'Iolani	51
Mid-Pacific	65

CHARLIE DOLE BOWL Varsity 3: 21 races

Punahou	18
'Iolani	23
Kamehameha	33
Saint Andrews	65
Sacred Hearts	69

Varsity 2—Developmental

'Iolani	58
Le Jardin	69
Sacred Hearts	70
Punahou	90
Mid-Pacific	161

Varsity 3—Developmental

Punahou	36
Kamehameha	53
Mid-Pacific	57
'Iolani	59

Slim Lambert was the next individual to profoundly affect my career. He was a lifelong sailor and donated his last racing boat, *Red Witch*, to the Waikiki Yacht Club Education Foundation. The sale of the boat was the largest single donation at that time and allowed the program to replace its aging Toppers; introduce a fleet of El Toros; and provide much needed support boats. This coincided with my graduation from UH in the late 1980s. I would not be here today without the infrastructure support provided by the WYCEF. Every single boat, sail, and engine was fundraised for, and purchased by, that foundation. When Slim passed in 1997, we named our Spring Youth Sailing Invitational for him. This year's event was run on May 2nd. We held a clinic in the morning and a regatta in the afternoon:

AFTERNOON REGATTA 14 BOATS

1st Liam Chattergy 9 points; 2nd Paxton Woo 10 points; 3rd Kazu Fowler 13 points; 4th (and top Wahine) Haruko Nagai 15 points



Jesse Uemura leads Paxton Woo in the Kerner Lewis Regatta



Henry Rhee with a powerful roll tack



Tight downwind racing in the Slim Lambert Regatta

The final event of the Spring was named for Sam Kerner and Andrew Lewis. Both sailors competed for, and won the US Sailing Youth Championships for WYC. Sam was instrumental in my career as he taught me virtually everything I know about sailing a Laser (particularly sailing in big breeze and waves off of Diamond Head). Andrew was my training partner as I finally won the State Single Handed Championship in 1997 and 1998. Andrew won four national championships in 1999 and went on to place 5th in the world. We named our Spring Laser Championship three years ago to emphasize the importance of Laser Sailing at WYC going back all the way to 1971. This year's event also had single handed Toppers. There is something very cool about getting to race my own son in this event and seeing him excel. The only thing better is tying him and winning the tiebreaker.

LASER A

Guy Fleming	6 points
Spencer Fleming	6 points
Charlie Field	17 points
Mathew Widlansky	20 points

LASER B

Henry Rhee	12 points
Kazu Fowler	14 points
Liam Chattergy	19 points
Haruko Nagai	30 points (Top Wahine)
Corey Farah	34 points

TOPPER

Jesse Uemura	6 points (Top Wahine)
Calum Lu	9 points
Paxton Woo	11 points
Taesong Shin	14 points
Milo Ongjoco	15 points
Noah Durant	16 points



June Boatique News

Chris Clothier



Father's Day is the third Sunday of the month on June 21. You have an extra week to shop this year for a perfect gift for all of the dads in your life. Shop early for the best selection! The Boatique has a great selection of Aloha shirts, WYC burgee tees including a new tank top, cruiser cotton shorts from Reyn Spooner, hats, and belts.

Reyn Spooner is celebrating National Parks with a Hawai'i Volcanoes National Park design available in black or blue. Their Surf Break Polo in sunset red is perfect for dads that prefer a polo. Ladies can match with the Mckenna Polo in moonlight blue.

Kahala's newest jacquard design, Makani Nui, means "big wind" in

Hawaiian. This fabric is a high-performance modified rayon, known for having a soft feel, being wrinkle-free, and moisture-wicking.

The Boatique also has an expanded selection of women's tops including a cotton short-sleeve burgee tee.

Waikiki YACHT CLUB
Boatique

Volunteers to help several hours a week, previous retail/merchandising experience helpful but not necessary!

Contact Chris at:
boatique@waikikiyachtclub.com

Store Hours:
Wed & Thurs: 11 am – 2 pm & 4 pm – 7 pm
Friday: 11 am – 2 pm & 4 pm – 8 pm
Sat & Sun: 11 am – 2 pm

DAOU WINE DINNER
VINAYARDS & WINERY

TUESDAY | JUNE 23 | 6-9:30 PM

Register early & secure your seat at the table.

\$135++
RSVP Only 50 Guests

6:00 PM
amuse-bouche sparkling wine reception

6:30 PM
5-course curated dinner featuring select Daou wines with each course

Waikiki YACHT CLUB

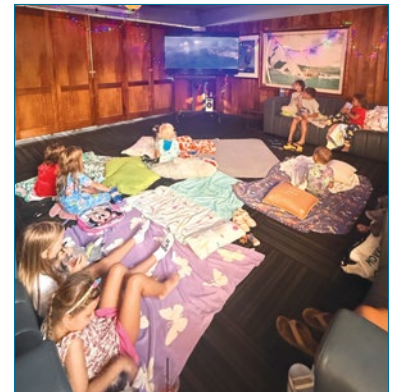
* 20% service charge* + tax | LIMITED TO THE FIRST 50 PRE-PAID RESERVATIONS | CANCELLATION POLICY IN EFFECT | Portions of the service charge may be used to offset employee expenses other than wages. Menu coming soon.

Secret Chef's Table



An intimate 5 course dinner paired with bourbon for 16 members & guests

Keiki Movie Night



Keiki watching Zootopia 2 while parents enjoy date night on the wharf

Kentucky Derby



Commodore Peter Rudlowski with wife, Lori



Chris Clothier, one of the Derby winners

The Windward Beat News

1599 Ala Moana Blvd.,
Honolulu, HI 96814

Phone: (808) 955-4405

URL: www.waikikiyachtclub.com

Email: wyc@waikikiyachtclub.com

OUR HOURS OF OPERATION

Business Office:

Wed, Thurs, Sat & Sun: 9 am - 5 pm
Fri: 9 am - 7 pm, Holidays 9 am - 3 pm
Closed on Christmas & New Year's Day

Boatique:

Wed & Thurs: 11 am - 2 pm & 4 - 7 pm
Fri: 11 am - 2 pm & 4 - 8 pm
Sat & Sun: 11 am - 2 pm

2026 BOARD OF DIRECTORS

Commodore	Peter Rudlowski commodore@waikikiyachtclub.com
Vice Commodore	Gini Enos vicecommodore@waikikiyachtclub.com
R/C for Sail	James Ramsey rc-sail@waikikiyachtclub.com
R/C for Power	S/C Mike Kelly rc-power@waikikiyachtclub.com
Secretary	Alan Joaquin secretary@waikikiyachtclub.com
Treasurer	Brian Goldstein treasurer@waikikiyachtclub.com
Directors	Donald "Sof" Hanson, David Yamane, Robert Frazier
Immediate Past Commodore	Mike Buelsing

2026 COMMITTEE CHAIRS

Activities	Bobby Frazier activities@waikikiyachtclub.com
Communications	Vacant communications@waikikiyachtclub.com
Finance	Don Engle finance@waikikiyachtclub.com
House & Grounds	Donald "Sof" Hanson house-grounds@waikikiyachtclub.com
Long-Range Planning	Shawn Kelly shawnokelly@gmail.com
Membership	Caroline Brown membership@waikikiyachtclub.com
Port Captain	Brandon Fredrick portcaptain@waikikiyachtclub.com
Nominating	Mark Hazlett nominating@waikikiyachtclub.com
Operating	Gini Enos vicecommodore@waikikiyachtclub.com
Paddling	Christine Denton, Leila Goldstein paddling@waikikiyachtclub.com
Regatta/Cal 20's	Peter Webb cal20@waikikiyachtclub.com
Food & Beverage	Dick Porter food-beverage@waikikiyachtclub.com
General Manager	Dennis Conneally GM@waikikiyachtclub.com

WINDWARD BEAT

WWB Editor	Kay Yamaguchi windwardbeat@waikikiyachtclub.com
------------	---

Food & Beverage

F&B Committee Chair Dick Porter

The Food & Beverage Committee needs to hear from you! Last year the Food & Beverage (F&B) Committee conducted a survey of the total Club membership regarding their dining experience(s) at the Waikiki Yacht Club. Since then, the Club staff and F&B Committee have been striving to address some of the current areas of concern.

The F&B Committee's function has changed from that of an advisory body to a "monitor, report, and coordinate" body. Comments made to the Committee are summarized and submitted to the Board through the Operating Committee, ensuring that member inputs get the attention they deserve from the General Manager, Food & Beverage Director, WYC Board, and staff.

To better serve the Club membership, we need to hear from the members who participate in our food and beverage services. We solicit comments of any nature on wait staff

service and demeanor, food quality, menu selections, wait time from order to receipt, and other issues you'd like to draw attention to.

Use the following email address to communicate directly with the F&B Committee, General Manager, and the Food & Beverage Director—all in one place: food-beverage@waikikiyachtclub.com. If you find something particularly pleasing, we'd like to hear about it. The same goes for recommendations for improvement or requests for changes. We can't address your concerns unless we hear from you.

The Food & Beverage Committee meets by Zoom on the second Wednesday of each month. If you want to attend the meeting, let us know via email and you will be provided with the meeting ID and password.

The WYC F&B Committee consists of the following members:
Tomma Irvine
Lyn Dubbs
Sue Curzon
Jason Kyatani, *Food & Beverage Director*
Bobby Frazier, *Director*
Dick Porter, *Chair*

We cordially invite anyone interested in joining us to hop aboard.

Membership Moments

Membership Committee Chair
Caroline Brown

Last month I talked about how you can get the most from your Club, so let's do a check-the-box exercise to see if you are getting the best bang for your buck.

Have you...

- been to the Club this month?
- tasted a weekly food special?
- tapped your toe to live music?
- got wet on the water or in the pool?
- raised your heart rate at the gym?
- had some witty banter at the bar?
- greeted a friend you haven't seen in a while?
- brought in a new member?
- taxed your brain cells in a quiz?

- treated yourself to a tasting menu with excellent food and wine?
- brought your keiki to movie night and had a quiet supper "a deux"?
- tickled your tonsils with a karaoke song?

How many did you check off?

1-4: Could do better ~ but find your joy!

5-8: You are really enjoying life at the Club. Bring your friends to play in our sandbox!

9-12: What a pro you are! Do you know anyone like you that would love to join our Club?

Don't forget! Through October, the more new members you bring to the Club, the more you get rewarded through our Membership Recruitment Incentive Program.



WORKING WITH WYC



Meade Group

Andrew R. Meade

Senior Vice President
Wealth Management Advisor
808.525.8303
andrew.meade@ml.com

Merrill Lynch Wealth Management

1003 Bishop Street
Suite 2800
Honolulu, HI 96813
fa.ml.com/meadegroup



Merrill Lynch, Pierce, Fenner & Smith Incorporated (also referred to as "MLPF&S" or "Merrill") makes available certain investment products sponsored, managed, distributed or provided by companies that are affiliates of Bank of America Corporation ("BoFA Corp."). MLPF&S is a registered broker-dealer, registered investment adviser, Member SIPC and a wholly owned subsidiary of BoFA Corp.
© 2022 Bank of America Corporation. All rights reserved. | MAP4264780 | AD-06-22-0191 | 470944PM-0222

Les Vasconcellos Boat Bottom Services

P.O. BOX 22520
Honolulu, Hawaii 96823-2520
(808) 955-3512



Since 1982

Waikiki  YACHT CLUB

Open House

BOAT RIDE • GROUP TOURS • PUPUS



LET'S ADD TO THE 'OHANA!
INVITE FRIENDS, FAMILY, CO-WORKERS,
& MORE TO EXPERIENCE THE RICH HISTORY
& ALOHA SPIRIT OF OUR CLUB.

RSVP

Saturday, June 20, 1:00-5:00 PM
1599 Ala Moana Blvd, Honolulu, HI 96814
waikikiyachtclub.com



YOUR COMPLETE PLUMBING CONTRACTOR • SERVING HAWAII SINCE 1994



FULL KITCHEN & BATH RENOVATION SPECIALISTS

Service & Repairs • Electronic Leak Detection
Sewer & Water Line Locating • Solar Hot Water Systems
Heater Installations • Residential & Commercial Services
Certified Backflow Testing • Propane & Gas Piping



ISLANDWIDE SERVICE / FREE ESTIMATES

WE SOLVE CHALLENGES. CALL 735-8595

825 HALEKAUWILA ST. HONOLULU, HI 96813 | WCONTRACTINGINC.COM | BC-20690

2026

JUNE



SUN	MON	TUE	WED	THU	FRI	SAT
	1 Club Closed	2 Club Closed Cal 20 Pig Out Regatta 5p Paddling Practice Adult Experienced 5:15p	3 Adult Dinghy Sailing 1-5p Backgammon Night 6:30p	4 Paddling Practice Adult Experienced 5:15p	5 Beer Can Race 5p Live Music 6:30-9:30p GREEN FLASH Friday Night Fireworks	6 Musical Bingo 6:30-8p
7 Adult Dinghy Sailing 9:30a-1:30p, 2:30-6:30p Paddling Practice Adult New & Novice 9a Live Music 10:30a-1:30p DERRICK LEE	8 Club Closed	9 Club Closed Cal 20 Pig Out Regatta 5p Paddling Practice Adult Experienced 5:15p	10 Adult Dinghy Sailing 1-5p Membership CMTE 4:30p House & Grounds CMTE 5:30p Backgammon Night 6:30p	11 Paddling Practice Adult Experienced 5:15p	12 Beer Can Race 5p Live Music 6:30-9:30p GINAI Friday Night Fireworks	13 King Kamehameha Regatta Live Music 6-9p NOTSO PURDY
14 Adult Dinghy Sailing 9:30a-1:30p, 2:30-6:30p Paddling Practice Adult New & Novice 9a Live Music 10:30a-1:30p JOHN COELHO	15 Club Closed	16 Club Closed Cal 20 Pig Out Regatta 5p Paddling Practice Adult Experienced 5:15p	17 Adult Dinghy Sailing 1-5p Finance CMTE 4p OPS CMTE 5:30p Backgammon Night 6:30p	18 Paddling Practice Adult Experienced 5:15p	19 Beer Can Race 5p Live Music 6:30-9:30p 11 TH HOUR Friday Night Fireworks	20 Summer Solstice Raft Up 1-4p Open House 1-5p Karaoke Night with DJ Ray Adames 6-9p
21 Father's Day Brunch Special - Steak & Eggs Adult Dinghy Sailing 9:30a-1:30p, 2:30-6:30p Paddling Practice Adult New & Novice 9a Live Music 10:30a-1:30p FRESH BREEZE	22 Club Closed	23 Club Closed Cal 20 Pig Out Regatta 5p Paddling Practice Adult Experienced 5:15p Daou Wine Dinner 6-9:30p	24 Adult Dinghy Sailing 1-5p Board of Directors Mtg 5:30p Backgammon Night 6:30p	25 Paddling Practice Adult Experienced 5:15p	26 Beer Can Race 5p Live Music 6:30-9:30p JEFF SAID NO Friday Night Fireworks	27 Pink Buoy Memory Lane Party, 5-8p Trivia Night 6:30-8p
28 Adult Dinghy Sailing 9:30a-1:30p, 2:30-6:30p Paddling Practice Adult New & Novice 9a Live Music 10:30a-1:30p THE GARY EXPERIENCE	29 Club Closed	30 Club Closed Cal 20 Pig Out Regatta 5p Paddling Practice Adult Experienced 5:15p				

Calendar is subject to change. For event confirmation, contact WYC office at (808) 955-4405 or email wyc@waikikiyachtclub.com.